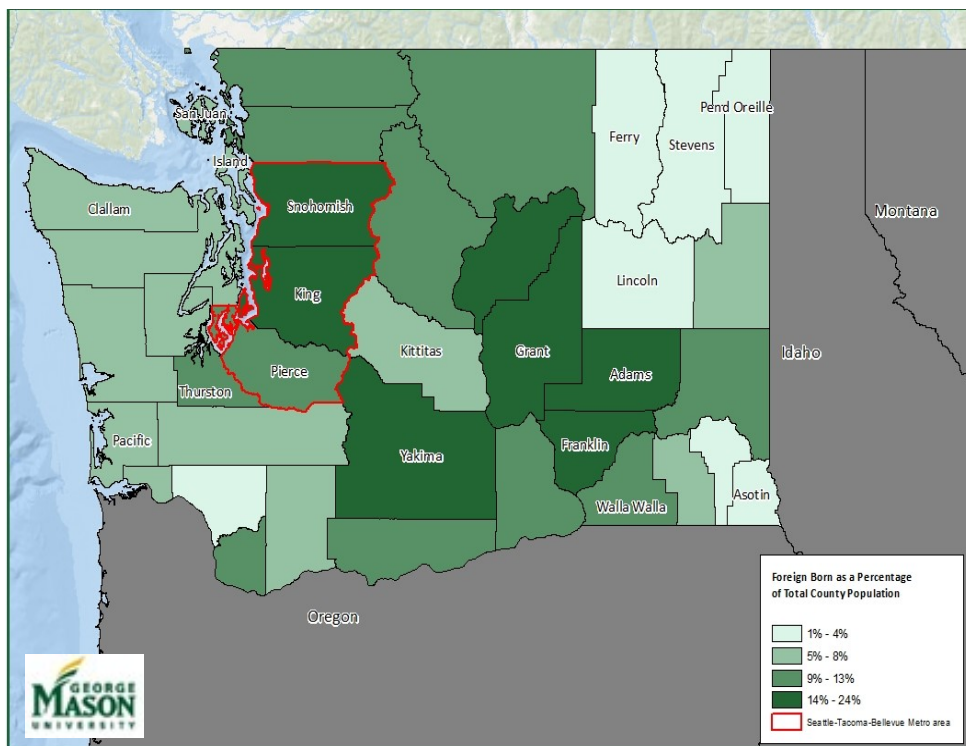


Immigrants in the Seattle-Tacoma-Bellevue Metropolitan Area

Figure 1. Immigrants in Washington



Note: This data was prepared by the George Mason University Institute for Immigration Research (IIR). 2022. This data is displayed at the county level. Maps are based on IPUMS National Historical Geographic Information System: Version 16.0. ACS 2016-2020 dataset. Minneapolis: University of Minnesota. 2022.

2020 NUMBERS AT A GLANCE

- **44,411,750:** Approximate number of immigrants living in the U.S. (14% of the population)
- **1,101,200:** Approximate number of immigrants in Washington State (15% of the state's population)
- **11th:** Rank of Washington among the 50 states and the District of Columbia in terms of immigrants as a percentage of the state's total population
- **763,500:** Approximate number of immigrants in the Seattle-Tacoma-Bellevue Metropolitan Area (19% of the metropolitan area population)
- **34th:** Rank of the Seattle-Tacoma-Bellevue Metropolitan Area among the 260 identified metro areas in terms of immigrants as a percentage of the metro's population
- **38%:** Estimated increase in the number of immigrants in the Seattle-Tacoma-Bellevue Metropolitan Area in the past 10 years i.e., 2010-2020)

Distribution of Immigrants

Figure 1 shows how the immigrant population is distributed across the state of Washington. The three counties located within the Seattle-Tacoma-Bellevue Metropolitan Area (Seattle metro area) have relatively high rates of immigrants as a proportion of total county population: King (24%), Snohomish (17%), and Pierce (10%). King County has the second largest share of immigrants within the state of Washington. The other remaining top five counties are Adams (24%), Franklin (22%), Yakima (18%), and Grant (18%), respectively. With the exception of King, the top five counties are located within the south and southeastern part of the state. The counties with the lowest proportion of foreign-born residents are Pend Oreille (4%), Asotin (3%), Stevens (3%), Lincoln (2%), and Ferry (1%). All of the states in the bottom five are located in the northeast corner of the state, with the exception of Asotin which is located in the southeastern most corner.

All analysis in this fact sheet is based on source data from the U.S. Census Bureau American Community Survey, 2016-2020 distributed through IPUMS-USA, University of Minnesota, www.ipums.org, unless otherwise noted.

Please note that the terms "immigrant" and "foreign born" are used interchangeably throughout this fact sheet. Foreign born refers to individuals who are not a U.S. citizen at birth or who were born outside the U.S., Puerto Rico or other U.S. territories and whose parents are not U.S. citizens. The foreign born may include naturalized U.S. citizens, Legal Permanent Residents, temporary residents, refugees and asylees, and others. Additionally, native born includes those who are U.S. citizens at birth, those born in the United States, Puerto Rico, or other U.S. territories, and those born abroad to a parent who is a U.S. citizen.

Immigrants in the Seattle-Tacoma-Bellevue Metropolitan Area

Figure 2. Age Among Immigrants

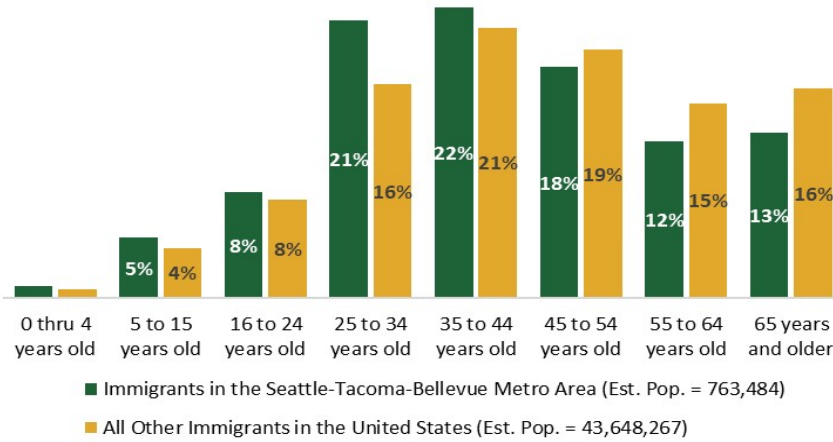


Figure 2 shows the distribution of ages among immigrants. Overall, immigrants in the Seattle metro area are slightly younger compared to all other immigrants in the United States. For example, more than half (57%) of immigrants in the Seattle metro area are under the age of 45 compared to 49% of all other immigrants in the United States. The median age among immigrants in the Seattle metro area is 41 and the median age among immigrants in the rest of the U.S. is 45. Additionally, there is a larger proportion of senior citizens, aged 55 and older, in the remainder of the U.S. (31%) than in the Seattle metro area (25%).

Figure 3. Race and Hispanic Origin Among Immigrants

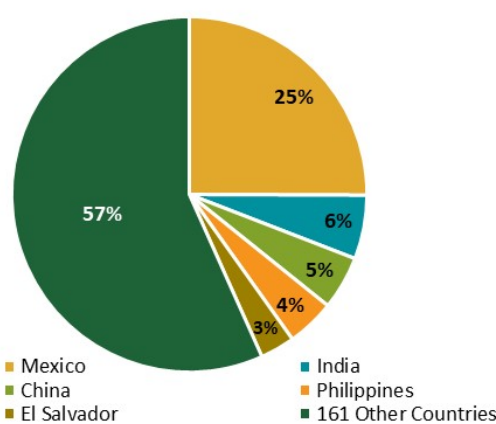
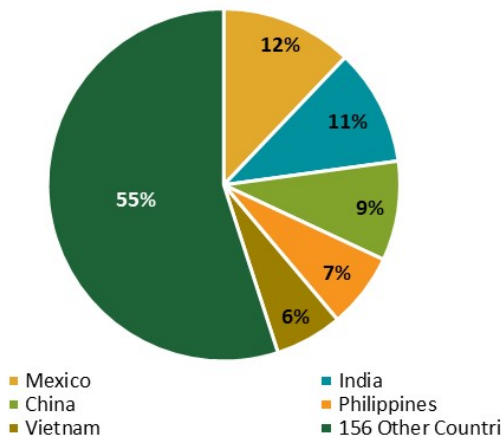
	Immigrants in the Seattle-Tacoma-Bellevue Metro Area	All Other Immigrants in the United States
White	28%	42%
Asian	50%	27%
Black	9%	9%
Other Race	10%	16%
Two or More Races	4%	6%
Not Hispanic	82%	55%
Hispanic	18%	45%
Estimated Immigrant Population	763,484	43,648,267

As demonstrated by Figure 3, immigrants living in the Seattle metro area are less likely to identify as white compared to all other immigrants living in the United States (28% vs. 42%). The two sides of Washington's foreign-born population can also be seen in the large percentage of Asians in Seattle and the small percentage of Hispanics there compared to the U.S. as a whole. For example, roughly half of immigrants in the Seattle metro area identify as Asian (50%), which is almost twice as many as the rest of the U.S. (27%). Additionally, while almost half of the immigrants in the rest of the U.S. identify as Hispanic (45%), only 18% of immigrants in the Seattle metro area identify as such. These disparities are likely attributable to the fact that four out of five of the top countries of birth in the Seattle metro area are Asian countries as demonstrated in Figure 4 below.

Figure 4. Countries of Birth Among Immigrants

Immigrants in the Seattle-Tacoma-Bellevue Metro Area (Est. Pop. = 763,484)

All Other Immigrants in the United States (Est. Pop. = 43,648,267)



Immigrants in the two reference groups share the same top four countries of birth and in the same ranking order. However, while Mexico ranks as the number one place of birth for immigrants in both reference groups, the remainder of the U.S. has twice the proportion of Mexican born immigrants (25%) as the Seattle metro area (12%). The remaining top four countries of birth in the Metro area are all Asian countries, while El Salvador rounds out the top five country of origin for the remainder of the U.S. Additionally, while India, China, and the Philippines comprise the 2nd, 3rd, and 4th top countries of birth for both reference groups, the Seattle metro area has higher proportions of immigrants from these three Asian Countries (27%), than that of the rest of the U.S. (15%).

Immigrants in the Seattle-Tacoma-Bellevue Metropolitan Area

Figure 5. Year of Immigration Among Immigrants

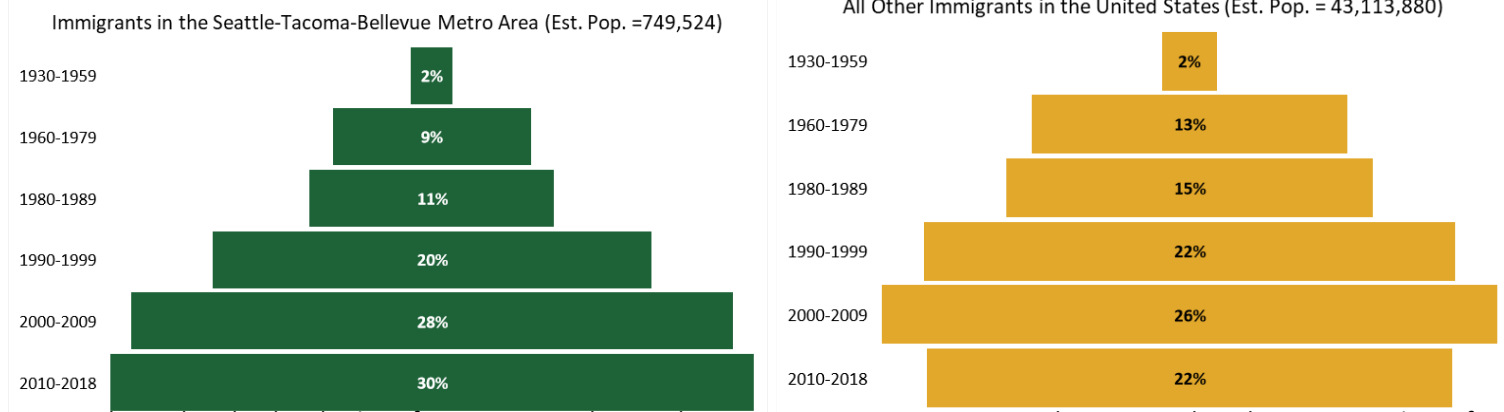


Figure 5 shows that the distribution of immigrants in the Seattle metro area represents a pyramid structure where larger proportions of immigrants in this area immigrated to the U.S. in each subsequent time period. Immigrants living in the Seattle metro arrived to the U.S. more recently compared to all other immigrants living in the United States. For example, more than half (58%) of immigrants living in the Seattle metro area arrived after the year 2000, while in the rest of the United States, slightly less than half (48%) of immigrants arrived after this time period. Additionally, the median year of arrival for foreign-born individuals in the Seattle metro area is 2002. This is slightly later compared to all other immigrants in the United States whose median year of arrival is 1999.”

Figure 6. Occupation Among Immigrants

In the Labor Force, Employed, Ages 16-65

Immigrants in the Seattle-Tacoma-Bellevue Metro Area		All Other Immigrants in the United States	
Service Occupations	21%	Service Occupations	23%
Computer, Engineering, and Science Occupations	19%	Management, Business, and Financial Occupations	13%
Management, Business, and Financial Occupations	15%	Construction and Extraction Occupations	8%
Office and Administrative Support Occupations	7%	Transportation and Material Moving Occupations	8%
Transportation and Material Moving Occupations	7%	Computer, Engineering, and Science Occupations	8%
8 Other Occupational Groups	32%	8 Other Occupational Groups	40%
Estimated Immigrant Population	470,997	Estimated Immigrant Population	25,351,581

Immigrants living in the Seattle metro area and all other immigrants living in the United States are employed in four of the five same top occupational groups. However, immigrants in the Seattle metro area are nearly 2.5 times more likely to be employed in computer, engineering, and science occupations compared to all other immigrants in the United States (19% vs. 8%). Higher rates of employment in computer, engineer, and science occupations can be attributed to the fact that Seattle is a large technology, software, and web development hub. Additionally, immigrants living in the Seattle metro area are more likely to earn a bachelor’s degree or higher (46% vs. 32%) and a personal income of \$75,000 or more compared to all other immigrants in the United States (44% vs. 26%).

For factsheets that examine populations at the household level, please note that a household includes all the people who occupy a housing unit. A native-born U.S. citizen household is defined as a household which is headed by a native-born U.S. citizen, regardless of the immigration status of the spouse. Conversely, an immigrant-headed household is defined as a household which is headed by a foreign-born individual, regardless of the immigration status of the spouse. For fact sheets that examine total household income, please note that the total annual income of all members in the household is included in the analysis. For fact sheets that examine personal income, personal income refers to total personal income earned on an annual basis.

For fact sheets that examine poverty status, please note that it excludes individuals who live in group quarters and those who are under the age of 18 with no family.

IIR fact sheets are created following standard definitions established by the U.S. Census Bureau. Please consult <https://www.census.gov/topics/> for clarification as to important distinctions such as those between industry and occupation.

Immigrants in the Seattle-Tacoma-Bellevue Metropolitan Area



Institute for Immigration Research

Immigration Data on Demand (iDod)

The goal of iDod is to connect people with customized data about immigrants in particular regions or sectors of interest. This data provides insights into the vital contributions immigrants make to the economy and society.

The Institute for Immigration Research (IIR)

The IIR's mission is to produce valid, reliable, and objective multidisciplinary research on immigrants and immigration to the United States and to disseminate this information through peer-reviewed academic journals, as well as in print and digital formats that make this research easily accessible to policy-makers, the media, the business community, and the general public. The Institute for Immigration Research is a joint venture between George Mason University and the Immigrant Learning Center, Inc. (ILC) of Malden, MA.

www.iir.gmu.edu

4400 University Drive, MSN 1D7

Fairfax, VA 22030

703.993.5833