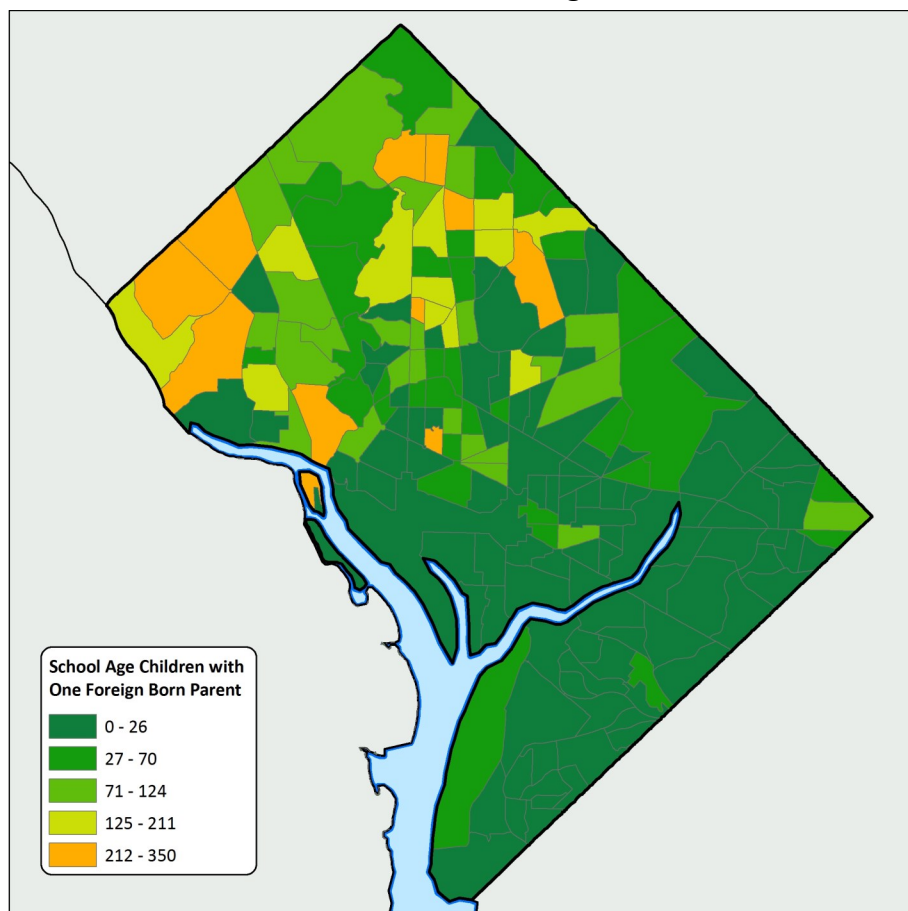


Children of Immigrants in Washington D.C. 2011-2015

iDod: Fact Sheets with Data on Immigrants, Customized For You, For Free.

Number of School-Age Children with at Least One Immigrant Parent



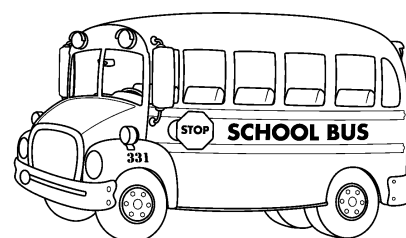
The data presented in these fact sheets reflects information available on school-age children (ages 4-17) who live in the District of Columbia. The majority of the analyses here, with the exception of this page, are for school-age children who have at least one parent who is a non-citizen.

The map on the left represents the density of school age children who have at least one parent who is an immigrant. The density of these children falls mainly in the west and north of the District, which is consistent with the density of immigrant residents as a whole. The highest density areas are Palisades, Spring Valley, Georgetown, Dupont, Rock Creek Park, and Fort Totten areas.

The table at the bottom left represents the cross tabulation of mother and father citizenship statuses for each school age District resident. It shows that 12.6 percent of children living in District who attend school have a non-citizen mother, and 9.7 percent have a non-citizen father. Also, 42.1 percent of children who attend school are represented in these data with a single mother, and 8.3 percent have a single father. Note: these data are not for households, percentages and totals are for each child attending school and living in the District.

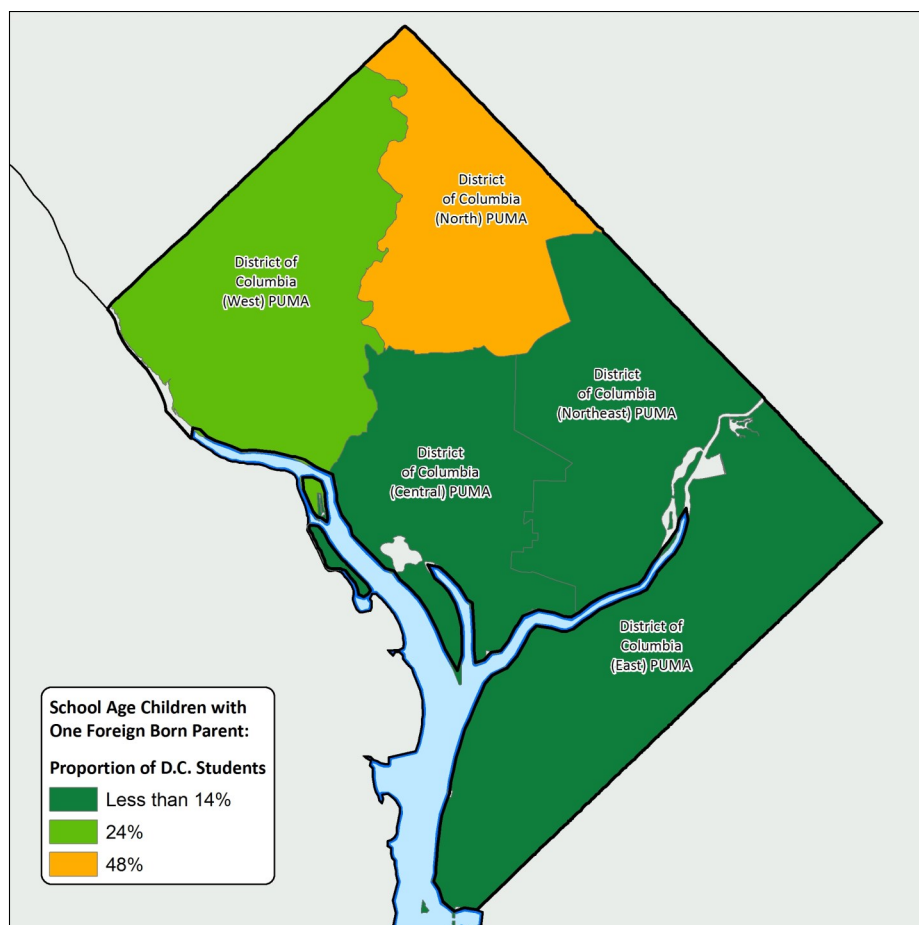
Citizenship Status of School Children's Parents Who Live in District

		Citizenship of Father				
		U.S. Born	Naturalized Citizen	Not a Citizen	Father N/A	Total
Citizenship of Mother	U.S. Born	26.3%	1.7%	1.1%	42.1%	71.1%
	Naturalized Citizen	2.2%	3.1%	1.2%	1.6%	8.0%
	Not a Citizen	0.8%	1.5%	6.0%	4.2%	12.6%
	Mother N/A	6.0%	0.9%	1.4%	--	8.3%
	Total	35.2%	7.2%	9.7%	47.8%	Est. Total Children: 67,312



Children of Immigrants in Washington D.C. 2011-2015

Density of Children Attending School with at Least One Non-Citizen Parent



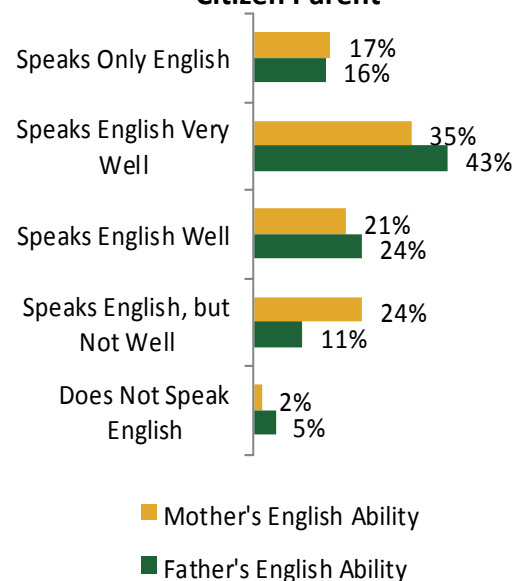
The map on the left presents the density of school children with at least one non-citizen parent. The largest group (48 percent of all children who fit this category) live in the northern portion of the District.

The table at the bottom left is a breakdown of citizenship status for school children with at least one non-citizen parent. The majority of those students are U.S. citizens by birth, and mainly live in the western and northern portions of the District.

Displayed below is the English language ability of parents of children with at least one non-citizen parent. Fluency (speaking English very well or better) in fathers is much higher than in mothers of these children. Note that the lowest English competencies only represent 16 - 26 percent of parents.

Citizenship of Children Attending School with At Least One Non-Citizen Parent						
	D.C. (West)	D.C. (North)	D.C. (Northeast)	D.C. (East)	D.C. (Central)	All D.C. Children with One Non-Citizen Parent
U.S. Born	13%	38%	7%	5%	11%	74%
Naturalized Citizen	1%	1%	--	--	--	2%
Non-Citizen	10%	10%	2%	<1%	3%	24%
All D.C. Children with One Non-Citizen Parent	24%	48%	9%	5%	14%	Est. Total: 10,921

English Language Ability for Parents of School Children with At Least One Non-Citizen Parent



Children of Immigrants in Washington D.C. 2011-2015

Father's Birth Region for School Children with At

	D.C. (West)	D.C. (North)	D.C. (Northeast)	D.C. (East)	D.C. (Central)	All D.C. Children with One Non-Citizen Parent
U.S. and Territories	4.1%	1.1%	0.9%	0.3%	0.3%	7%
N. America	0.1%	0.2%	--	--	0.1%	0%
C. America and Mexico	1.1%	28.6%	1.2%	1.3%	8.0%	40%
Caribbean	--	0.8%	0.3%	--	0.2%	1%
S. America	3.0%	3.9%	1.3%	--	--	8%
N. Europe	5.5%	0.7%	1.4%	--	0.2%	8%
W. Europe	7.9%	0.4%	0.3%	--	--	9%
S. Europe	2.9%	0.2%	--	--	--	3%
C./E. Europe	2.7%	0.2%	0.5%	--	--	3%
E. Asia	0.5%	0.3%	0.1%	--	1.0%	2%
S.E. Asia	--	--	--	0.1%	0.6%	1%
S.W. Asia including India	0.9%	1.0%	--	0.1%	--	2%
W. Africa	--	2.3%	0.7%	0.8%	--	4%
E. Africa	--	5.9%	0.2%	0.8%	--	7%
C. Africa	--	2.3%	--	0.2%	0.1%	3%
S. Africa	0.5%	0.1%	--	--	--	1%
Oceania	0.7%	--	0.9%	--	--	2%
All D.C. Children with One Non-Citizen Parent	30%	48%	8%	4%	10%	8,106

In the tables above the world regions of birth are recorded for the parents of children who have at least one parent who is a non-citizen. Note in the western part of the District, the largest proportion of non-citizen parents come from Europe, whereas in northern and central parts of the District the largest

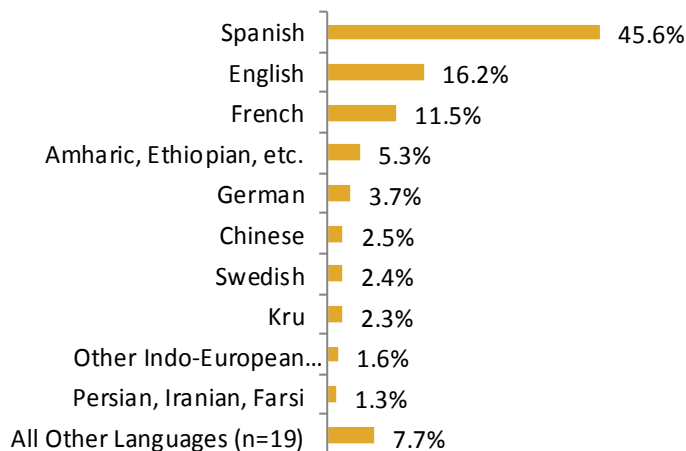
Mother's Birth Region for School Children with At Least One

	D.C. (West)	D.C. (North)	D.C. (Northeast)	D.C. (East)	D.C. (Central)	All D.C. Children with One Non-Citizen Parent
U.S. and Territories	4.7%	0.9%	0.4%	—	0.4%	6%
N. America	0.2%	0.8%	—	—	0.2%	1%
C. America and Mexico	1.1%	29.3%	3.8%	0.9%	8.4%	43%
Caribbean	—	1.2%	0.4%	1.7%	1.4%	5%
S. America	2.7%	3.7%	0.7%	0.5%	1.3%	9%
N. Europe	2.9%	0.5%	0.8%	—	—	4%
W. Europe	4.9%	0.4%	0.3%	—	—	6%
S. Europe	2.2%	0.6%	—	—	—	3%
C./E. Europe	3.8%	—	0.3%	—	—	4%
E. Asia	1.2%	0.4%	0.4%	—	1.2%	3%
S.E. Asia	0.4%	0.4%	—	—	0.3%	1%
S.W. Asia including India	1.1%	0.8%	—	0.1%	0.0%	2%
W. Africa	0.3%	—	—	—	—	0%
E. Africa	—	1.7%	0.5%	0.7%	0.1%	3%
C. Africa	0.0%	5.4%	0.2%	0.5%	—	6%
S. Africa	—	1.7%	—	0.2%	—	2%
Oceania	0.2%	—	0.7%	—	—	1%
Other Countries of Birth	—	—	—	0.2%	—	0%
All D.C. Children with One Non-Citizen Parent	26%	48%	8%	5%	13%	9,980

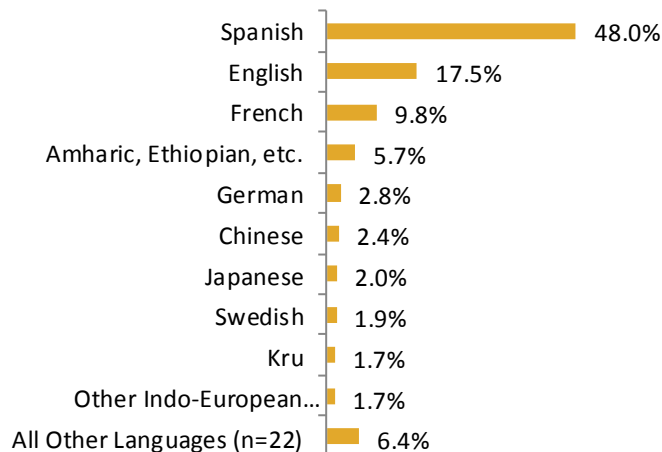
groups are from Latin America. There are also more children with reported values for their mother's birthplace than their father's. This could be due to the proportion of single-parent families.

Children of Immigrants in Washington D.C. 2011-2015

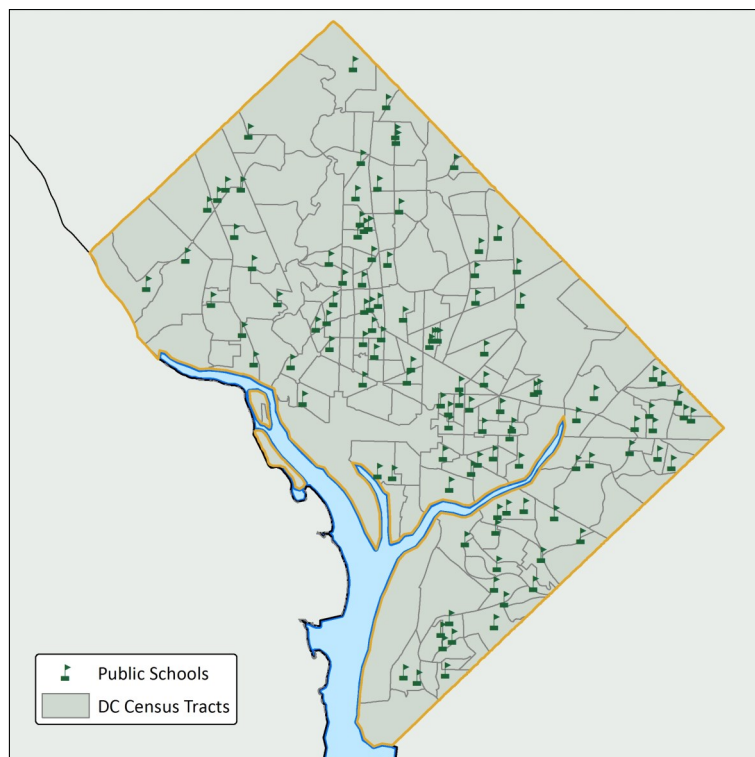
Top 10 Languages Spoken at Home by Fathers of School Children with At Least One Non-Citizen Parent



Top 10 Languages Spoken at Home by Mothers of School Children with At Least One Non-Citizen Parent



Locations of D.C. Public Schools



For reference purposes, the map on the left presents the location of District public schools within U.S. Census bureau tract geographies.

The above graphs display the top ten languages spoken at home by parents of children with at least one non-citizen parent. There are many languages spoken at home, and the diversity of languages spoken by these parents ranges across the globe. Asian, African, and European languages are all present in the top 10, and many others are present in smaller proportions. Note: mothers of these children tend to speak more languages at home, which may be due, in part, to the larger population of single mothers. Interesting differences can be seen in Japanese as well as Persian, Iranian, or Farsi, which are spoken more by mothers and fathers, respectively.

ABOUT THE INSTITUTE FOR IMMIGRATION RESEARCH

IIR works to refocus the immigration conversation among academics, policy-makers and the public, including the business community and media, by producing and disseminating unbiased and objective, interdisciplinary academic research related to immigrants and immigration to the United States. The Institute for Immigration Research is a joint venture between George Mason University and the Immigrant Learning Center, Inc. (ILC) of Massachusetts.

IMMIGRATION DATA ON DEMAND (iDod)

The iDod service is offered free of charge to help individuals and institutions examine the immigrant populations of their particular geography. Recipients of this data will see how immigrants provide vital contributions to the economy and society of the U.S. Ultimately, the goal of the iDod project is to create collaborations and connect people with data from their particular region or sector of interest on immigrant populations.