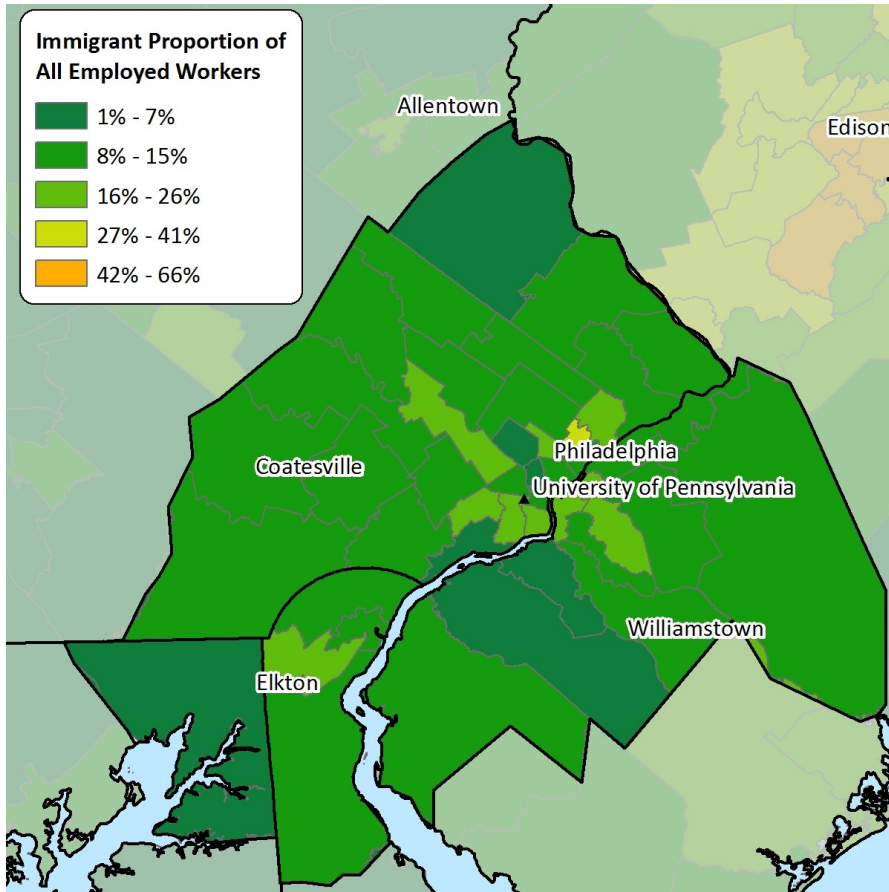


Immigrants in Philadelphia, PA Metro Area, 2010-2014

iDod: Fact Sheets with Data on Immigrants, Customized For You, For Free.

Immigrant Proportion of Employed Workers for Philadelphia Metro Area



The map on the left shows the immigrant proportion of employed workers for the Philadelphia metro area. A high proportion of immigrant workers are located in the northern part of Philadelphia. There is a significant proportion of immigrant workers in the areas surrounding the University of Pennsylvania and west of Philadelphia.

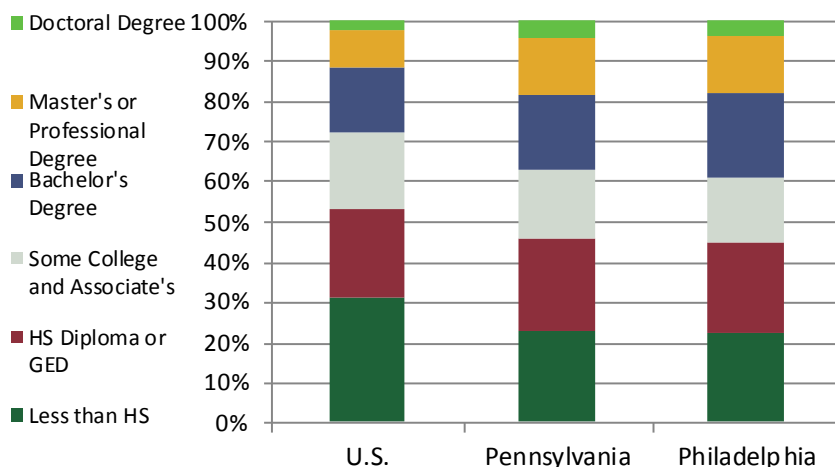
According to the graph to the bottom left, a greater proportion of immigrants tend to have less than a high school diploma on the national level when compared to the Philadelphia metro area. Twenty-one percent of immigrants in Philadelphia have at least a bachelor's degree, compared to 16 percent of immigrants on a national level. Nationwide, two percent of immigrants have a PhD, but in the Philadelphia metro area four percent of immigrants have a PhD.

The chart below indicates that English is the most spoken language among immigrants in the Philadelphia metro area.

Top Ten Languages Spoken by Immigrants (age 5+) in Philadelphia Metro Area

Language	Proportion
English	21%
Spanish	20%
Chinese	6%
Russian	4%
Korean	4%
Vietnamese	4%
Filipino, Tagalog	3%
Gujarathi	2%
Hindi	2%
French	2%
All Other Languages	32%
Estimated Total Immigrants (age 5+)	594,857

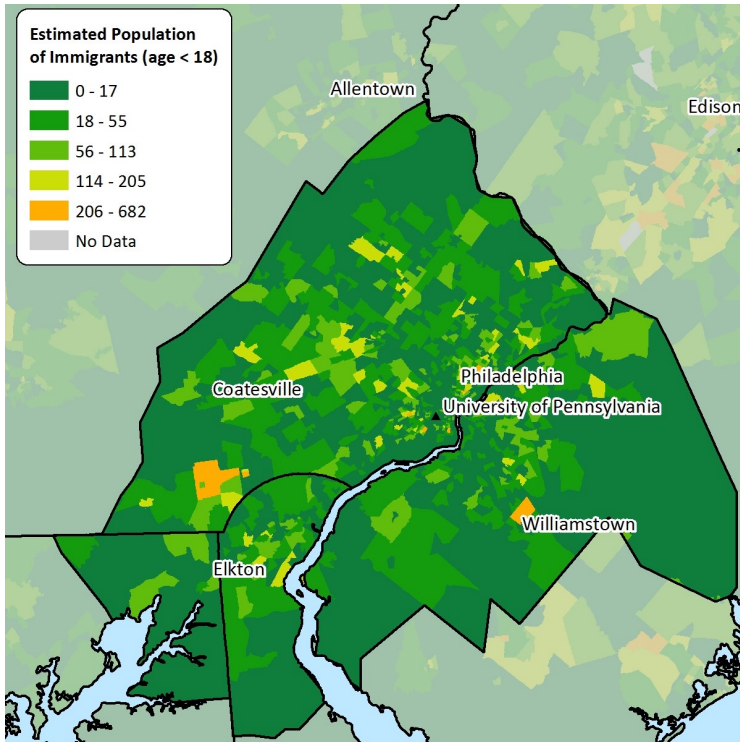
Educational Attainment for Immigrants (age 25+)



Source: U.S. Census Bureau. American Community Survey, 2010-2014. ipums.org extracts. Tigerline shapefiles.

Immigrants in Philadelphia, PA Metro Area, 2010-2014

Population of Immigrant Children in Philadelphia metro area

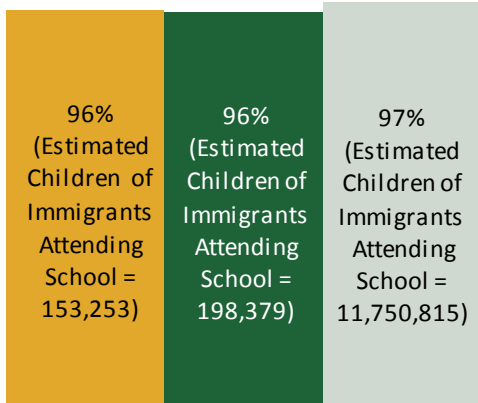


The map to the left displays the estimated population of immigrant children in the Philadelphia metro area. Higher populations of this group live in Philadelphia and the area near the University of Pennsylvania. Also, high proportions of immigrant children reside near Williamstown and north of Elkton.

The graph at the bottom left indicates that an overwhelming proportion of children of immigrants attend school in the Philadelphia metro area, similar to children of immigrants at the state and national levels.

The chart below indicates that immigrant heads of household in the Philadelphia metro area are at par with the number of children they have with immigrant heads of household at the state and national levels, with a few exceptions. A higher percentage of immigrant heads of household at the local and state levels have no children. Additionally, a higher percentage of immigrant heads of household at the national level have three children.

Rate of School Attendance for Children, Ages 5-17, who have at least one Immigrant Parent*



■ Philadelphia Metro Area ■ Pennsylvania ■ U.S.

*Data for this chart was based on a more recent (2011-2015) ACS Dataset.

ABOUT THE INSTITUTE FOR IMMIGRATION RESEARCH

IIR works to refocus the immigration conversation among academics, policy-makers and the public, including the business community and media, by producing and disseminating unbiased and objective, interdisciplinary academic research related to immigrants and immigration to the United States. The Institute for Immigration Research is a joint venture between George Mason University and the Immigrant Learning Center, Inc. (ILC) of Massachusetts.

Number of Children for Immigrant Heads of Household

	Philadelphia	Pennsylvania	U.S.
No Children Present	48%	50%	44%
Single Child	21%	21%	21%
Two Children	20%	20%	21%
Three Children	7%	7%	10%
Four Children	2%	2%	3%
Five or More Children	1%	1%	1%
Estimated Total Immigrant Households	247,207	320,514	16,554,579