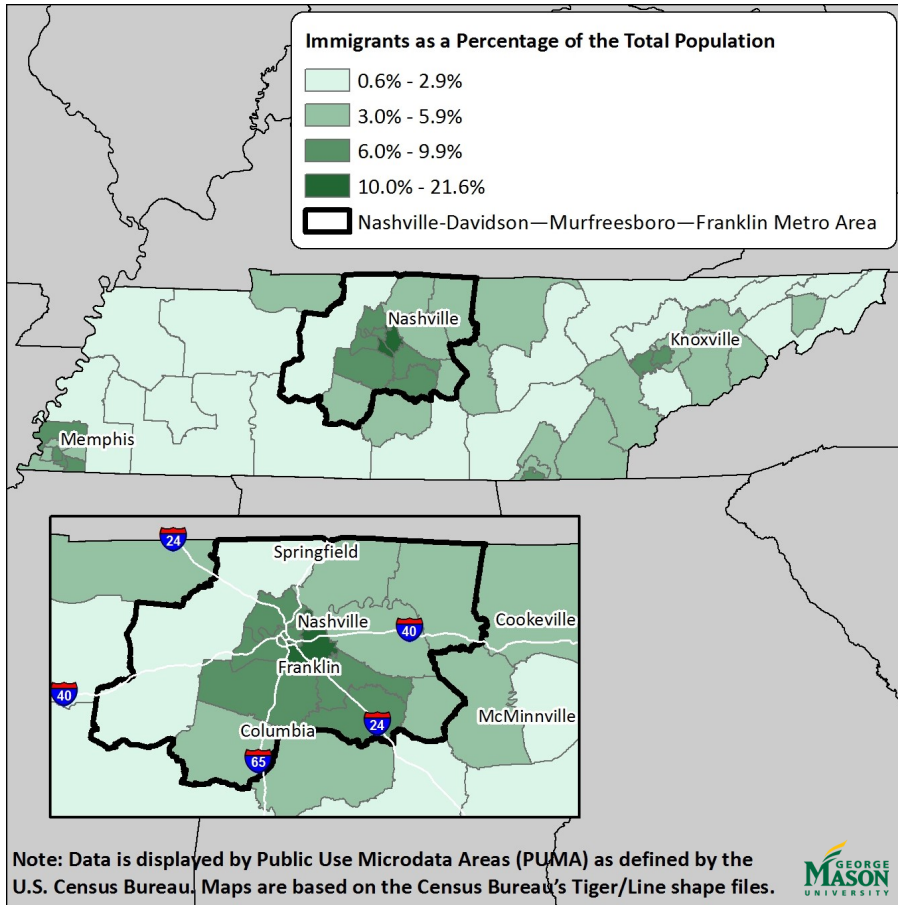


Immigrants in the Nashville-Davidson--Murfreesboro--Franklin, Tennessee Metropolitan Area

Figure 1. Immigrants in the Nashville Metropolitan Area
Foreign Born as a Percentage of the Total Population



2015 NUMBERS AT A GLANCE

- **41,757,110:** Approximate number of immigrants* living in the U.S. (13% of the population)
- **310,500:** Approximate number of immigrants living in Tennessee (5% of the state's population)
- **140,000:** Approximate number of immigrants living in the Nashville Metropolitan Area (7% of the area's population)
- **36th:** Rank of the state of Tennessee among the 50 states and Washington, D.C. in terms of immigrants as a percentage of the state's population

Distribution of Immigrants in Tennessee

Figure 1 shows where immigrants live in Tennessee. There are higher proportions of immigrants living in the areas surrounding the city of Nashville, Knoxville, and Memphis compared to other parts of the state. Additionally, immigrants make up a smaller share of the population in the northeast and western portion of the state.

Age

Figure 2 shows the age distribution among foreign-born individuals living in the Nashville metro area, Tennessee, and across the United States. Overall, immigrants living in the Nashville metro area (median age of 36) and the state of Tennessee (median age of 37) tended to be slightly younger compared to immigrants living in the United States (median age of 43).

Figure 2. Age Distribution Among the Foreign Born

	Nashville Metro Area	Tennessee	United States
0 to 4 years old	1%	1%	1%
5 to 15 years old	8%	6%	4%
16 to 24 years old	12%	12%	9%
25 to 34 years old	24%	25%	18%
35 to 44 years old	26%	24%	22%
45 to 54 years old	15%	15%	19%
55 to 64 years old	8%	9%	13%
65+ years old	6%	8%	14%
Estimated Immigrant Population	139,761	310,521	41,757,110

All analysis in this fact sheet is based on source data from the U.S. Census Bureau American Community Survey, 2011-2015 distributed through IPUMS-USA, University of Minnesota, www.ipums.org.

*Please note that the terms "immigrant" and "foreign born" are used interchangeably throughout this fact sheet. Foreign born refers to individuals who are not a U.S. citizen at birth or who were born outside the U.S., Puerto Rico or other U.S. territories and whose parents are not U.S. citizens. The foreign born may include naturalized U.S. citizens, Legal Permanent Residents, temporary residents, refugees and asylees, and others. Additionally, native born includes those who are U.S. citizens at birth, those born in the United States, Puerto Rico, or other U.S. territories, and those born abroad to a parent who is a U.S. citizen.

**Please note that poverty status does not include individuals who are homeless (including individuals under the age of 18) or individuals who reside in group quarters (e.g. college residence halls, residential treatment centers, skilled nursing facilities, group homes, military barracks, correctional facilities, and workers' dormitories).

Immigrants in the Nashville-Davidson--Murfreesboro--Franklin, Tennessee Metropolitan Area

Country of Birth

Figure 3 shows the top five countries of birth among immigrants living in the Nashville metro area, Tennessee, and across the United States. Compared to the U.S., there are larger shares of immigrants from Guatemala living in the Nashville metro area and Tennessee. Additionally, there are larger percentages of immigrants from El Salvador and Egypt/United Arab Republic living in the Nashville metro area, compared to immigrants living in Tennessee and across the United States.

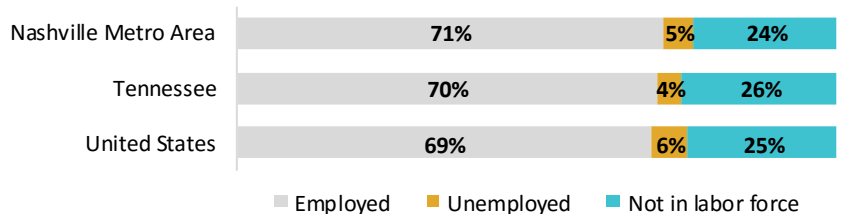
 **Figure 3. Top 5 Countries of Birth Among the Foreign Born**

Nashville Metro Area		Tennessee		United States	
Mexico	29%	Mexico	29%	Mexico	28%
India	6%	India	6%	India	5%
El Salvador	4%	Guatemala	4%	Philippines	5%
Egypt/United Arab Rep.	4%	China	3%	China	4%
Guatemala	4%	Canada	3%	Vietnam	3%
All Other Countries (n=136)	53%	All Other Countries (n=147)	55%	All Other Countries (n=155)	55%
Estimated Immigrant Population	139,761	Estimated Immigrant Population	310,521	Estimated Immigrant Population	41,757,110

Employment

Figure 4 shows the employment status and labor force participation rates among foreign-born individuals living in the Nashville metro area, Tennessee, and across the U.S. Overall, immigrants living in the Nashville metro area reported slightly higher employment rates compared to immigrants in Tennessee and the United States.

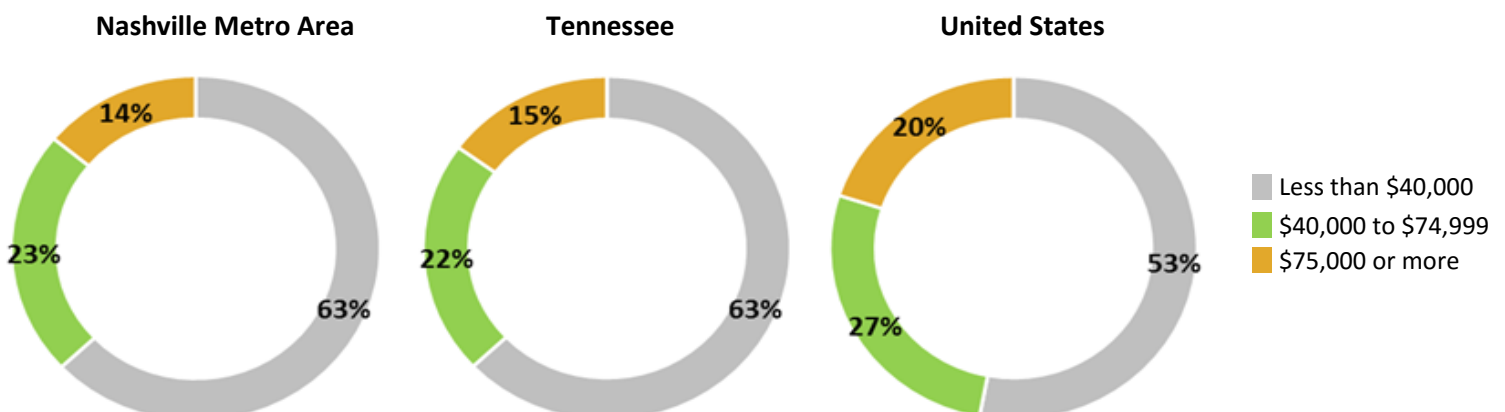
 **Figure 4. Employment Status Among the Foreign Born**
Immigrants Age 16 – 65



Income

Figure 5 highlights the personal earned income among full-time employed immigrants in the Nashville metro area, Tennessee, and the U.S. Overall, while immigrants in the Nashville metro area and Tennessee are more likely to be employed compared to immigrants in the United States, they were less likely to earn \$75,000 or more and more likely to earn less than \$40,000.

 **Figure 5. Personal Income Among the Foreign Born**
Full-time Employed Immigrants Age 16+

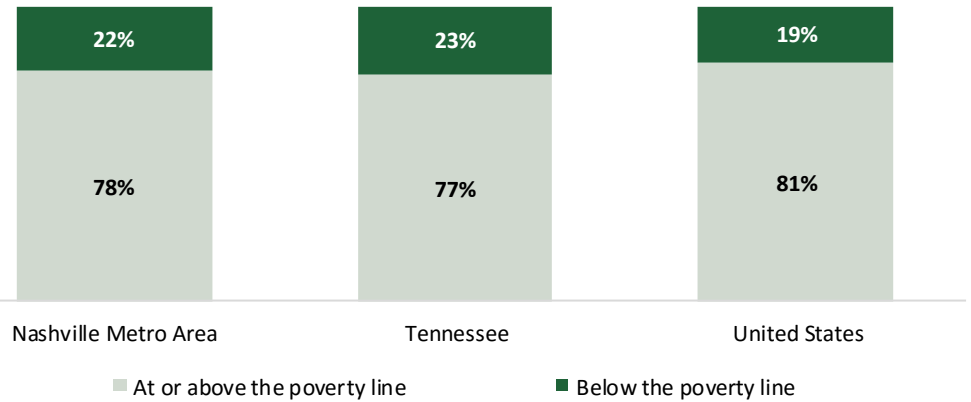


Immigrants in the Nashville-Davidson--Murfreesboro--Franklin, Tennessee Metropolitan Area

Poverty Status

Figure 6 highlights poverty status** among foreign-born individuals living in the Nashville metro area, Tennessee, and across the United States. Overall immigrants living in the United States reported higher percentages of individuals living at or above the poverty line compared to immigrants living in the Nashville metro area and Tennessee.

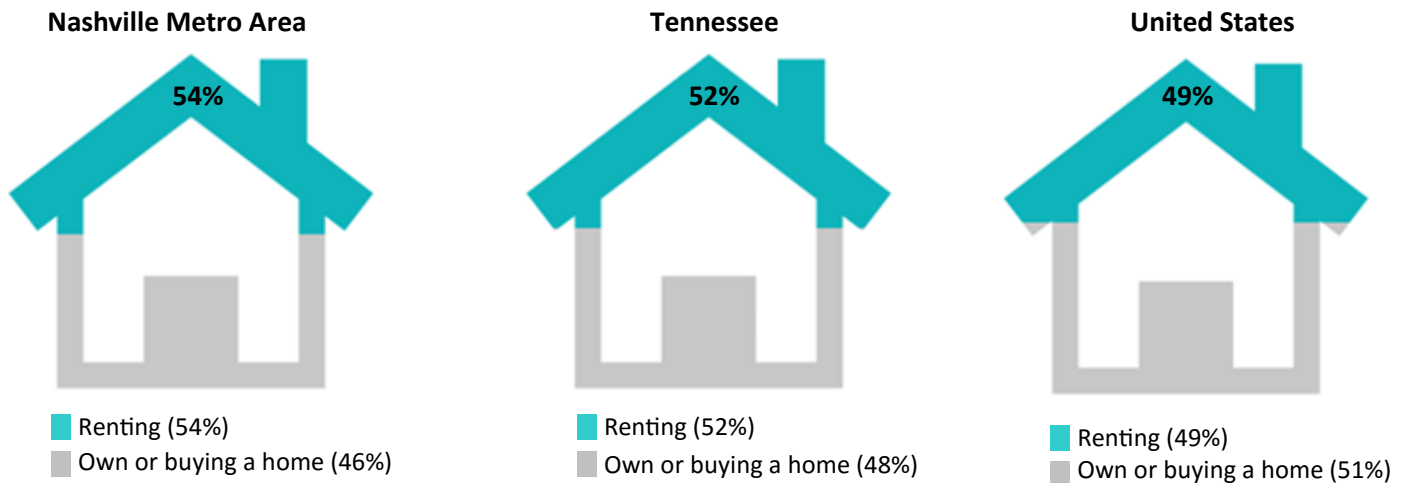
 **Figure 6. Poverty Status Among the Foreign Born**



Homeownership

Figure 7 shows the rate of homeownership among foreign born household heads living in the Nashville metro area, Tennessee, and across the U.S. Approximately 46 percent of immigrant household heads in the Nashville metro area and 48 percent of immigrant household heads Tennessee own or are currently purchasing a home. This is slightly lower compared to immigrants in the United States (51 percent).

 **Figure 7. Homeownership Among the Foreign Born**
Immigrant Household Heads, Age 16+



ABOUT THE INSTITUTE FOR IMMIGRATION RESEARCH

The IIR works to refocus the immigration conversation among academics, policy-makers and the public, including the business community and media, by producing and disseminating unbiased and objective, interdisciplinary academic research related to immigrants and immigration to the United States. The Institute for Immigration Research is a joint venture between George Mason University and the Immigrant Learning Center, Inc. (ILC) of Massachusetts. To learn more about the Institute for Immigration Research call (703) 993-5833, email iir@gmu.edu, or visit us online at iir.gmu.edu.